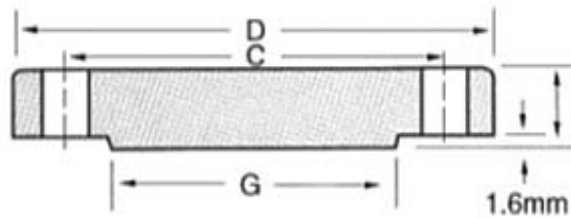


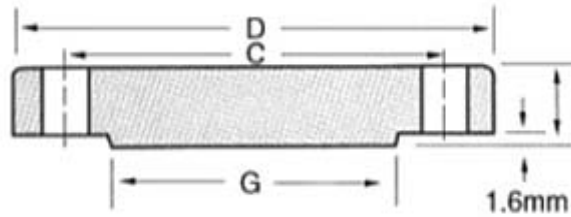
**ANSI CLASS150 BLIND FLANGES**



UNIT:mm

Size	Flange		Raised Face Dia	Drilling			Weight (kgs/pc)
	Out Dia	Thickness		No.	Dia of Hole	Dia of bolt Circle	
	D	t	G			C	
1/2"	89	11.2	35.1	4	15.7	60.5	0.47
3/4"	98	12.7	42.9	4	15.7	69.9	0.63
1"	108	14.2	50.8	4	15.7	79.2	0.94
1 1/4"	117	15.7	63.5	4	15.7	88.9	1.23
1 1/2"	127	17.5	73.2	4	15.7	98.6	1.62
2"	152	19.1	91.9	4	19.1	120.7	2.64
2 1/2"	178	22.4	104.6	4	19.1	139.7	4.06
3"	191	23.9	127.0	4	19.1	152.4	4.90
3 1/2"	216	23.9	139.7	8	19.1	177.8	5.90
4"	229	23.9	157.2	8	19.1	190.5	7.41
5"	254	23.9	185.7	8	22.4	215.9	8.76
6"	279	25.4	215.9	8	22.4	241.3	11.31
8"	343	28.4	269.7	8	22.4	298.5	19.92
10"	406	30.2	323.9	12	25.4	362	29.39
12"	483	31.8	381.0	12	25.4	431.8	43.70
14"	533	35.1	412.8	12	28.4	476.3	59.42
16"	597	36.6	469.9	16	28.4	539.8	77.11
18"	635	39.6	533.4	16	31.8	577.9	94.80
20"	699	42.9	584.2	20	31.8	635.0	123.38
24"	813	47.8	692.2	20	35.1	749.3	188.24

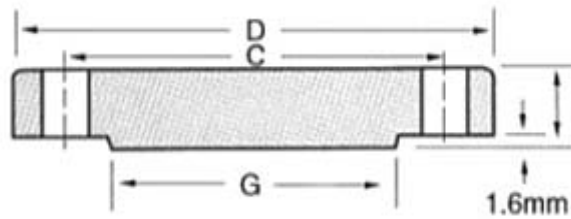
**ANSI CLASS300 BLIND FLANGES**



UNIT:mm

Size	Flange		Raised Face Dia	Drilling			Weight (kgs/pc)
	Out Dia	Thickness		No.	Dia of Hole	Dia of bolt Circle	
	D	t	G			C	
1/2"	95	14.2	35.1	4	15.7	66.5	0.62
3/4"	117	15.7	42.9	4	19.1	82.6	1.16
1"	124	17.5	50.8	4	19.1	88.9	1.42
1 1/4"	133	19.1	63.5	4	19.1	98.6	1.79
1 1/2"	155	20.6	73.2	4	22.4	114.3	2.68
2"	165	22.1	91.9	8	19.1	127.0	3.20
2 1/2"	191	25.4	104.6	8	22.4	149.4	4.75
3"	210	28.4	127.0	8	22.4	168.1	6.79
3 1/2"	229	30.2	139.7	8	22.4	184.2	9.53
4"	254	31.8	157.2	8	22.4	200.2	12.00
5"	279	35.1	185.7	8	22.4	235	15.96
6"	318	36.6	215.9	12	22.4	269.7	21.20
8"	381	41.1	269.7	12	25.4	330.2	34.60
10"	445	47.8	323.9	16	28.4	387.4	55.34
12"	521	50.8	381.0	16	31.8	450.9	78.90
14"	584	53.8	412.8	20	31.8	514.4	107.50
16"	648	57.2	469.9	20	35.1	571.5	139.25
18"	711	60.5	533.4	24	35.1	628.7	176.90
20"	775	63.5	584.2	24	35.1	685.8	223.17
24"	914	69.9	692.2	24	41.1	812.8	342.00

**ANSI CLASS600 BLIND FLANGES**



UNIT:mm

Size	Flange		Raised Face Dia	Drilling			Weight (kgs/pc)
	Out Dia	Thickness		No.	Dia of Hole	Dia of bolt Circle	
	D	t	G			C	
1/2"	95	14.2	35.1	4	15.7	66.5	0.91
3/4"	117	15.7	42.9	4	19.1	82.6	1.40
1"	124	17.5	50.8	4	19.1	88.9	1.81
1 1/4"	133	20.6	63.5	4	19.1	98.6	2.40
1 1/2"	155	22.4	73.2	4	22.4	114.3	3.40
2"	165	25.4	91.9	8	19.1	127.0	4.40
2 1/2"	191	28.4	104.6	8	22.4	149.4	6.80
3"	210	31.8	127.0	8	22.4	168.1	8.90
3 1/2"	229	35.1	139.7	8	25.4	184.2	13.17
4"	273	38.1	157.2	8	25.4	215.9	18.60
5"	330	44.5	185.7	8	28.4	266.7	30.84
6"	356	47.8	215.9	12	28.4	292.1	38.00
8"	419	55.6	269.7	12	31.8	349.3	62.20
10"	508	63.5	323.9	16	35.1	431.8	102.00
12"	559	66.5	381.0	20	35.1	489	132.00
14"	603	69.9	412.8	20	38.1	527.1	158.00
16"	686	76.2	469.9	20	41.1	603.3	224.73
18"	743	82.6	533.4	20	44.5	654.1	285.00
20"	813	88.9	584.2	24	44.5	723.9	365.00
24"	940	101.6	692.2	24	50.8	838.2	533.45