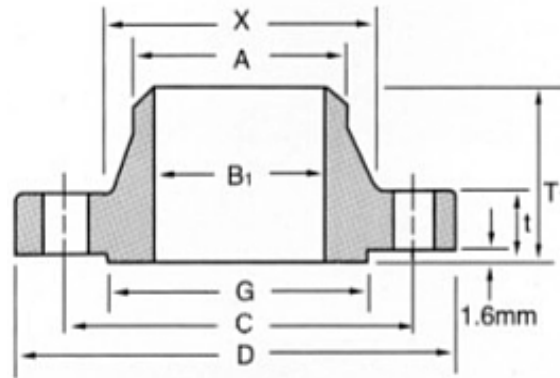


**ANSI CLASS 150 WELDING NECK FLANGES**



UNIT: mm

Size	Flange					Raised Face Dia	Length thru hub 2	Drilling			Dia of hub		Weight (kgs/pc)						
	Out Dia	Bore			Thick ness			No.	Dia of Hole	Dia of bolt Circle	At Base	At Chamfer							
		B1												t	G	T1	C	X	A
		S40	S80	S160															
1/2"	89	15.8	13.9	11.8	11.2	35.1	47.8	4	15.7	60.5	30.2	21.3	0.51						
3/4"	98	20.8	18.8	15.6	12.7	42.9	52.3	4	15.7	69.9	38.1	26.7	0.73						
1"	108	26.7	24.3	20.7	14.2	50.8	55.6	4	15.7	79.2	49.3	33.5	1.07						
1 1/4"	117	35.1	32.5	29.5	15.7	63.5	57.2	4	15.7	88.9	58.7	42.2	1.40						
1 1/2"	127	40.9	38.1	34	17.5	73.2	62	4	15.7	98.6	65	48.3	1.81						
2"	152	52.6	49.3	42.9	19.1	91.9	63.5	4	19.1	120.7	77.7	60.5	2.59						
2 1/2"	178	62.7	59	54	22.4	104.6	69.9	4	19.1	139.7	90.4	73.2	4.28						
3"	191	78.0	73.7	66.7	23.9	127.0	69.9	4	19.1	152.4	108	88.9	5.18						
3 1/2"	216	90.2	85.5	-	23.9	139.7	71.4	8	19.1	177.8	122.2	101.6	5.45						
4"	229	102.4	97.2	87.3	23.9	157.2	76.2	8	19.1	190.5	134.9	114.3	7.32						
5"	254	128.3	122.3	109.6	23.9	185.7	88.9	8	22.4	215.9	163.6	141.2	8.91						
6"	279	154.2	146.3	131.8	25.4	215.9	88.9	8	22.4	241.3	192	168.4	11.26						
8"	343	202.7	193.7	173.1	28.4	269.7	101.6	8	22.4	298.5	246.1	219.2	17.68						
10"	406	254.5	242.9	215.9	30.2	323.9	101.6	12	25.4	362	304.8	273.1	24.79						
12"	483	304.8	288.9	257.2	31.8	381.0	114.3	12	25.4	431.8	365.3	323.9	38.98						
14"	533	336.6	317.5	284.2	35.1	412.8	127.0	12	28.4	476.3	400.1	355.6	51.71						
16"	597	387.1	363.6	325.5	36.6	469.9	127.0	16	28.4	539.8	457.2	406.4	64.41						
18"	635	438.2	409.6	366.7	39.6	533.4	139.7	16	31.8	577.9	505	457.2	74.84						
20"	699	489	455.6	408	42.9	584.2	144.5	20	31.8	635.0	558.8	508.0	89.36						
24"	813	590.6	547.7	490.6	47.8	692.2	152.4	20	35.1	749.3	663.4	609.6	119.66						