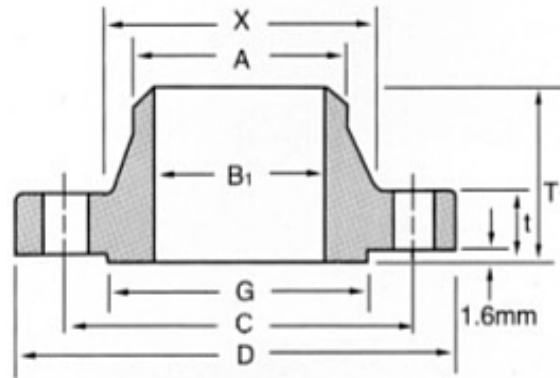


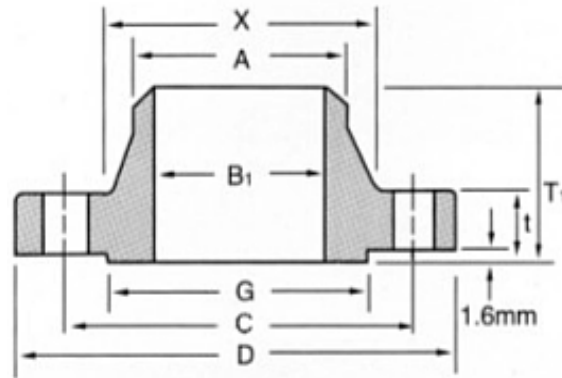
**ANSI CLASS 150 WELDING NECK FLANGES**



UNIT: mm

Size	Flange					Raised Face Dia	Length thru hub 2	Drilling			Dia of hub		Weight (kgs/pc)						
	Out Dia	Bore			Thick ness			No.	Dia of Hole	Dia of bolt Circle	At Base	At Chamfer							
		B1												t	G	T1	C	X	A
		S40	S80	S160															
1/2"	89	15.8	13.9	11.8	11.2	35.1	47.8	4	15.7	60.5	30.2	21.3	0.51						
3/4"	98	20.8	18.8	15.6	12.7	42.9	52.3	4	15.7	69.9	38.1	26.7	0.73						
1"	108	26.7	24.3	20.7	14.2	50.8	55.6	4	15.7	79.2	49.3	33.5	1.07						
1 1/4"	117	35.1	32.5	29.5	15.7	63.5	57.2	4	15.7	88.9	58.7	42.2	1.40						
1 1/2"	127	40.9	38.1	34	17.5	73.2	62	4	15.7	98.6	65	48.3	1.81						
2"	152	52.6	49.3	42.9	19.1	91.9	63.5	4	19.1	120.7	77.7	60.5	2.59						
2 1/2"	178	62.7	59	54	22.4	104.6	69.9	4	19.1	139.7	90.4	73.2	4.28						
3"	191	78.0	73.7	66.7	23.9	127.0	69.9	4	19.1	152.4	108	88.9	5.18						
3 1/2"	216	90.2	85.5	-	23.9	139.7	71.4	8	19.1	177.8	122.2	101.6	5.45						
4"	229	102.4	97.2	87.3	23.9	157.2	76.2	8	19.1	190.5	134.9	114.3	7.32						
5"	254	128.3	122.3	109.6	23.9	185.7	88.9	8	22.4	215.9	163.6	141.2	8.91						
6"	279	154.2	146.3	131.8	25.4	215.9	88.9	8	22.4	241.3	192	168.4	11.26						
8"	343	202.7	193.7	173.1	28.4	269.7	101.6	8	22.4	298.5	246.1	219.2	17.68						
10"	406	254.5	242.9	215.9	30.2	323.9	101.6	12	25.4	362	304.8	273.1	24.79						
12"	483	304.8	288.9	257.2	31.8	381.0	114.3	12	25.4	431.8	365.3	323.9	38.98						
14"	533	336.6	317.5	284.2	35.1	412.8	127.0	12	28.4	476.3	400.1	355.6	51.71						
16"	597	387.1	363.6	325.5	36.6	469.9	127.0	16	28.4	539.8	457.2	406.4	64.41						
18"	635	438.2	409.6	366.7	39.6	533.4	139.7	16	31.8	577.9	505	457.2	74.84						
20"	699	489	455.6	408	42.9	584.2	144.5	20	31.8	635.0	558.8	508.0	89.36						
24"	813	590.6	547.7	490.6	47.8	692.2	152.4	20	35.1	749.3	663.4	609.6	119.66						

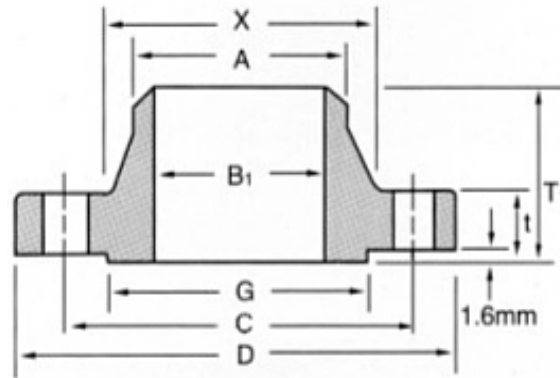
**ANSI CLASS 300 WELDING NECK FLANGES**



UNIT: mm

Size	Flange					Raised Face Dia	Length thru hub 2	Drilling			Dia of hub		Weight (kgs/pc)						
	Out Dia	Bore			Thick ness			No.	Dia of Hole	Dia of bolt Circle	At Base	At Chamfer							
		B1												t	G	T1	C	X	A
		S40	S80	S160															
1/2"	95	15.7	13.9	11.8	14.2	35.1	52.3	4	15.7	66.5	38.1	21.3	0.78						
3/4"	117	20.8	18.8	15.6	15.7	42.9	57.2	4	19.1	82.6	47.8	26.7	1.34						
1"	124	26.7	24.3	20.7	17.5	50.8	62	4	19.1	88.9	53.8	33.5	1.64						
1 1/4"	133	35.1	32.5	29.5	19.1	63.5	65	4	19.1	98.6	63.5	42.2	2.06						
1 1/2"	155	40.9	38.1	34	20.6	73.2	68.3	4	22.4	114.3	69.9	48.3	3.06						
2"	165	52.6	49.3	42.9	22.1	91.9	69.9	8	19.1	127.0	84.1	60.5	3.40						
2 1/2"	191	62.7	59	54	25.4	104.6	76.2	8	22.4	149.4	100.1	73.2	5.31						
3"	210	78	73.7	66.7	28.4	127.0	79.2	8	22.4	168.1	117.3	88.9	7.32						
3 1/2"	229	90.2	85.5	-	30.2	139.7	81.0	8	22.4	184.2	133.4	101.6	8.17						
4"	254	102.4	97.2	87.3	31.8	157.2	85.9	8	22.4	200.2	146.1	114.3	11.30						
5"	279	128.3	122.3	109.6	35.1	185.7	98.6	8	22.4	235	177.8	141.2	15.12						
6"	318	154.2	146.3	131.8	36.6	215.9	98.6	12	22.4	269.7	206.2	168.4	19.68						
8"	381	202.7	193.7	173.1	41.1	269.7	111.3	12	25.4	330.2	260.4	219.2	30.48						
10"	445	254.5	242.9	215.9	47.8	323.9	117.3	16	28.4	387.4	320.5	273.1	43.74						
12"	521	304.8	288.9	257.2	50.8	381.0	130	16	31.8	450.9	374.7	323.9	64.41						
14"	584	336.6	317.5	284.2	53.8	412.8	142.7	20	31.8	514.4	425.5	355.6	88.30						
16"	648	387.4	363.6	325.5	57.2	469.9	146.1	20	35.1	571.5	482.6	406.4	112.94						
18"	711	438.2	409.6	366.7	60.5	533.4	158.8	24	35.1	628.7	533.4	457.2	138.34						
20"	775	489	455.6	408	63.5	584.2	162.1	24	35.1	685.8	587.2	508.0	167.37						
24"	914	590.6	547.7	490.6	69.9	692.2	168.1	24	41.1	812.8	701.5	609.6	235.41						

**ANSI CLASS 600 WELDING NECK FLANGES**



UNIT: mm

Size	Flange					Raised Face Dia	Length thru hub 2	Drilling			Dia of hub		Weight (kgs/pc)						
	Out Dia	Bore			Thick ness			No.	Dia of Hole	Dia of bolt Circle	At Base	At Chamfer							
		B1												t	G	T1	C	X	A
		S40	S80	S160															
1/2"	95	15.8	13.9	11.8	14.2	35.1	52.3	4	15.7	66.5	38.1	21.3	0.90						
3/4"	117	20.9	18.8	15.6	15.7	42.9	57.2	4	19.1	82.6	47.8	26.7	1.59						
1"	124	26.6	24.3	20.7	17.5	50.8	62	4	19.1	88.9	53.8	33.5	1.90						
1 1/4"	133	35.1	32.5	29.5	20.6	63.5	66.5	4	19.1	98.6	63.5	42.2	2.49						
1 1/2"	155	40.9	38.1	34	22.4	73.2	69.9	4	22.4	114.3	69.9	48.3	3.63						
2"	165	52.5	49.3	42.9	25.4	91.9	73.2	8	19.1	127.0	84.1	60.5	4.54						
2 1/2"	191	62.7	59	54	28.4	104.6	79.2	8	22.4	149.4	100.1	73.2	6.35						
3"	210	77.9	73.7	66.7	31.8	127.0	82.6	8	22.4	168.1	117.3	88.9	8.16						
3 1/2"	229	90.1	85.5	-	35.1	139.7	85.9	8	25.4	184.2	133.4	101.6	11.80						
4"	273	102.3	97.2	87.3	38.1	157.2	101.6	8	25.4	215.9	152.4	114.3	16.78						
5"	330	128.3	122.3	109.6	44.5	185.7	114.3	8	28.4	266.7	189	141.2	30.87						
6"	356	154.1	146.3	131.8	47.8	215.9	117.3	12	28.4	292.1	222.3	168.4	36.77						
8"	419	202.7	193.7	173.1	55.6	269.7	133.4	12	31.8	349.3	273.1	219.2	50.80						
10"	508	254.5	242.9	215.9	63.5	323.9	152.4	16	35.1	431.8	342.9	273.1	86.26						
12"	559	303.2	288.9	257.2	66.5	381.0	155.4	20	35.1	489	400.1	323.9	102.51						
14"	603	333.3	317.5	284.2	69.9	412.8	165.1	20	38.1	527.1	431.8	355.6	121.56						
16"	686	381	363.6	325.5	76.2	469.9	177.8	20	41.1	603.3	495.3	406.4	177.06						
18"	743	428.7	409.6	366.7	82.6	533.4	184.2	20	44.5	654.1	546.1	457.2	215.64						
20"	813	477.8	455.6	408	88.9	584.2	190.5	24	44.5	723.9	609.6	508.0	267.85						
24"	940	547.6	547.7	490.6	101.6	692.2	263.2	24	50.8	838.2	717.6	609.6	372.00						